

ARCHITECTURE COMPETITION

STONE BARN MEDITATION CAMP

COMPETITION CONDITIONS

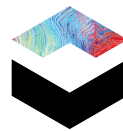


PARTNERS:



Bee Breeders architecture competition organisers
in partnership with
SRED GLOBAL
have prepared this document for
the purpose of arranging the
STONE BARN MEDITATION CAMP
architecture competition.

© Bee Breeders
architecture competition organisers
hello@beebreeders.com
beebreeders.com



CONTENTS

4	INTRODUCTION
5	ECOTOURISM
6	LATVIA - ONE OF GREENEST COUNTRIES IN EUROPE
9	THE COMPETITION
9	STONE BARN MEDITATION CAMP
10	THE COMPETITION SITE
14	PROGRAMME
14	SITE RESTRICTIONS
15	PROJECT PROPOSAL REQUIREMENTS
15	SUBMISSION REQUIREMENTS
15	RECOMMENDED SUBMISSION CONTENT
16	PRIZES
17	COMPETITION SCHEDULE
17	REGISTRATION FEES
18	JURY AND EVALUATION PROCESS
19	COMPETITION DOCUMENTATION
19	ELIGIBILITY
19	MEDIA PARTNERS
19	ARCHITECTURE STUDENTS

INTRODUCTION

The Bee Breeders Stone Barn Meditation Camp architecture competition encourages participants to create eco-friendly designs for a complex in the heart of Latvia, one of Europe's greenest countries.

Working in collaboration with SRED property developers, the Stone Barn Meditation Camp will be built on the site of a repurposed stone barn. Looking to serve as an example for green building practice, participants are tasked with focusing on eco-friendly and cost-effective designs to create an exciting and enticing wellness complex that will further encourage ecotourism in the region.

ECOTOURISM

Ecotourism, as defined by the World Conservation Union (IUCN), is "Environmentally responsible travel to natural areas, in order to enjoy and appreciate nature (and accompanying cultural features, both past and present) that promote conservation, have a low visitor impact and provide for beneficially active socio-economic involvement of local peoples."

Rather than simply offering sightseeing tours in beautiful, natural locations, ecotourism places a strong emphasis on conservation, education, traveler responsibility and community participation. In order to be classified as ecotourism, it must be sustainable and have a positive impact on the environment.

While some forms of ecotourism raise funds for conservation efforts, some focus on educating the traveler or to build community connections and respect for the environment, different cultures, and human and animal rights. Ecotourism also promotes green activities, such as recycling, energy efficiency, and water conservation, as well as creating economic opportunities for local communities.



Pokainu forest in Latvia as one of tourism sights; Image courtesy of <http://www.dobele.lv/>



Educational sightseeing; Image courtesy of <http://www.wisegeek.org/>

LATVIA

ONE OF GREENEST COUNTRIES IN EUROPE

Latvia has long been known as one of the greenest countries in the world; and was ranked second after Switzerland several years ago. Since the publication of the Environmental Index (EPI) survey, one of the top priorities for the Latvian government has been promoting and encouraging green living, particularly through its “homo ecos” campaign.

Latvia benefits from a rich and diverse ecosystem; with comparatively large areas of pristine nature. Approximately 54% of Latvia is forest, making it one of greenest countries in Europe. Natural areas are home to a wide variety of species such as black storks, lesser spotted eagles, otters, beaver, lynx, wolves, and great concentrations of deer, wild boar, elk, and red fox.

Roughly 20% of Latvia is protected land, with four national parks, 42 nature parks, 260 nature reserves, 355 nature monuments, seven protected marine areas, 24 micro reserves and a biosphere reserve. However these resources are finite, and so significant measures were taken to preserve them not just for the their own sake, but for the economical benefits that they provide in terms of tourism.





Turaida Castle; Image courtesy of <http://www.raamitravel.com/>



Pine tree forest; Image courtesy of <https://pixabay.com/>



Daugava River Nature Park; Image courtesy of <http://www.visitdaugavpils.lv/>



THE COMPETITION

STONE BARN MEDITATION CAMP

The Stone Barn Meditation Camp will be a haven for those looking to escape the stress of city life; and enjoy quiet contemplation in the countryside. While the complex will focus mainly on organising events and retreats for meditation enthusiasts, there will also be the option of joining yoga camps, kids' camps, and other small private events. The main focus of the complex is the meditation room, where visitors would be able to meet and practice. In addition, a "silence chamber" must be included, which should be a soundproof, isolated, and dark room. The building should be able to comfortably accommodate a maximum of 20 guests and 10 invited service staff. There will need to be a variety of different sized rooms ranging from single rooms; to double rooms for up to four people per room. Participants must also design a dining room and kitchen that would be able to host and serve all visitors.

The Stone Barn Meditation Camp will continue to be operated by the family who are the current owners. Competition participants must design a comfortable home for the family, as well as accommodation for guests. The host's private accommodation must be separate from the guest rooms. They can be under the same roof; however, the two areas must be clearly divided. The host family area must provide 2 bedrooms, library, living room, bathroom, and small kitchen.

Participants are also asked to consider the landscape. A covered terrace must be provided to host events in the summer in case of bad weather, as well as a relatively secluded open area that can also be used for meditation.



THE COMPETITION SITE

The competition site is situated in rural Vidzeme in the eastern region of Latvia. Known for both its cultural heritage and its natural beauty, the location is rich in forests, lakes and grasslands.

The stone barn was built in 1875 and operated as a sawmill until the late 1990s. All the equipment has since been removed, and part of the building has been demolished. Participants can download information on the existing structure, as well as the historical appearance from the competition website.

Participants can decide to restore the stone barn to its original historical design or reimagine its structure in a new way. However, the existing building cannot be demolished, only added to or enhanced.



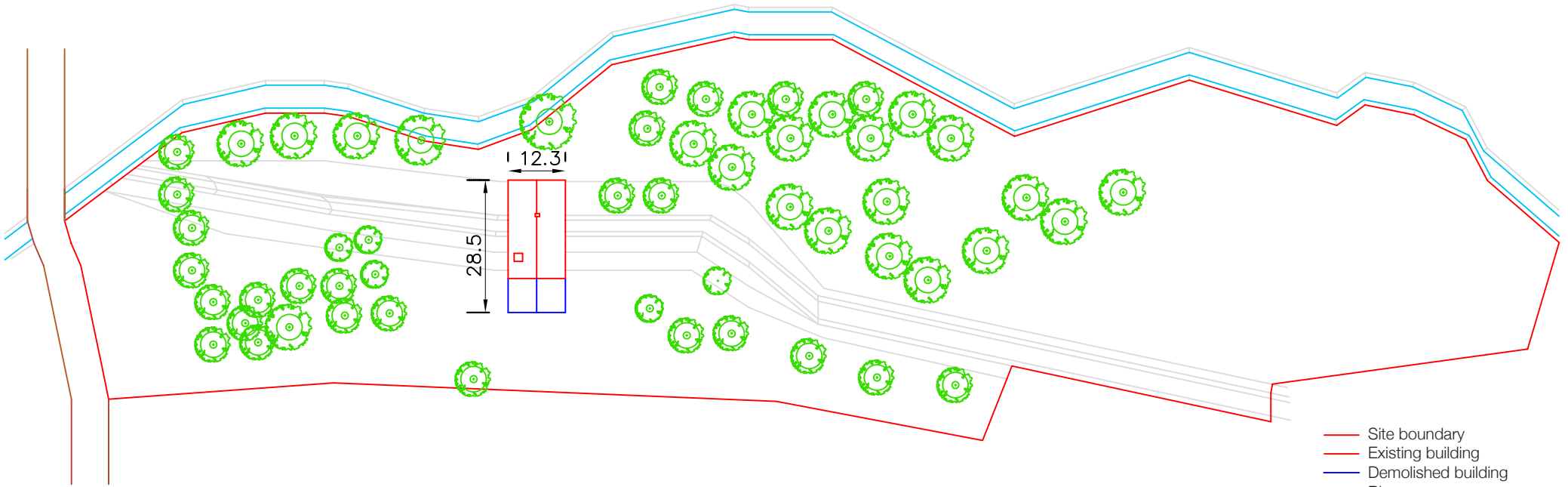
SITE COORDINATES:

@56.7510509,26.0178136

SITE CAD, PDF PLAN AND SECTIONS, AND 3D SKETCH UP MODEL ARE AVAILABLE FOR DOWNLOAD AT STONEBARNMEDITATIONCAMP.BEEBREEDERS.COM

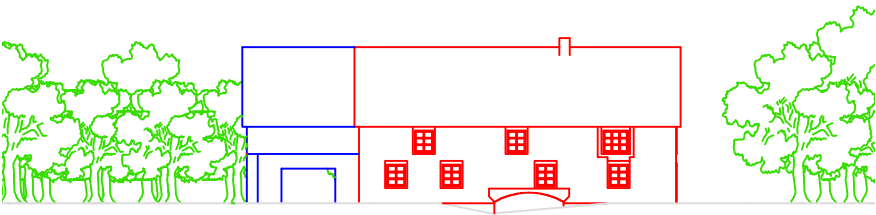
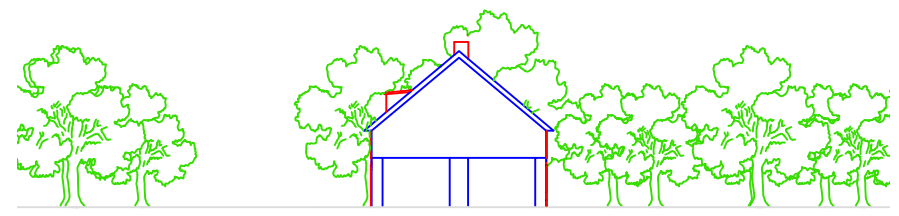


SITE PHOTOGRAPHS ARE AVAILABLE FOR
DOWNLOAD AT
STONEBARNMEDITATIONCAMP.BEEBREEDERS.COM



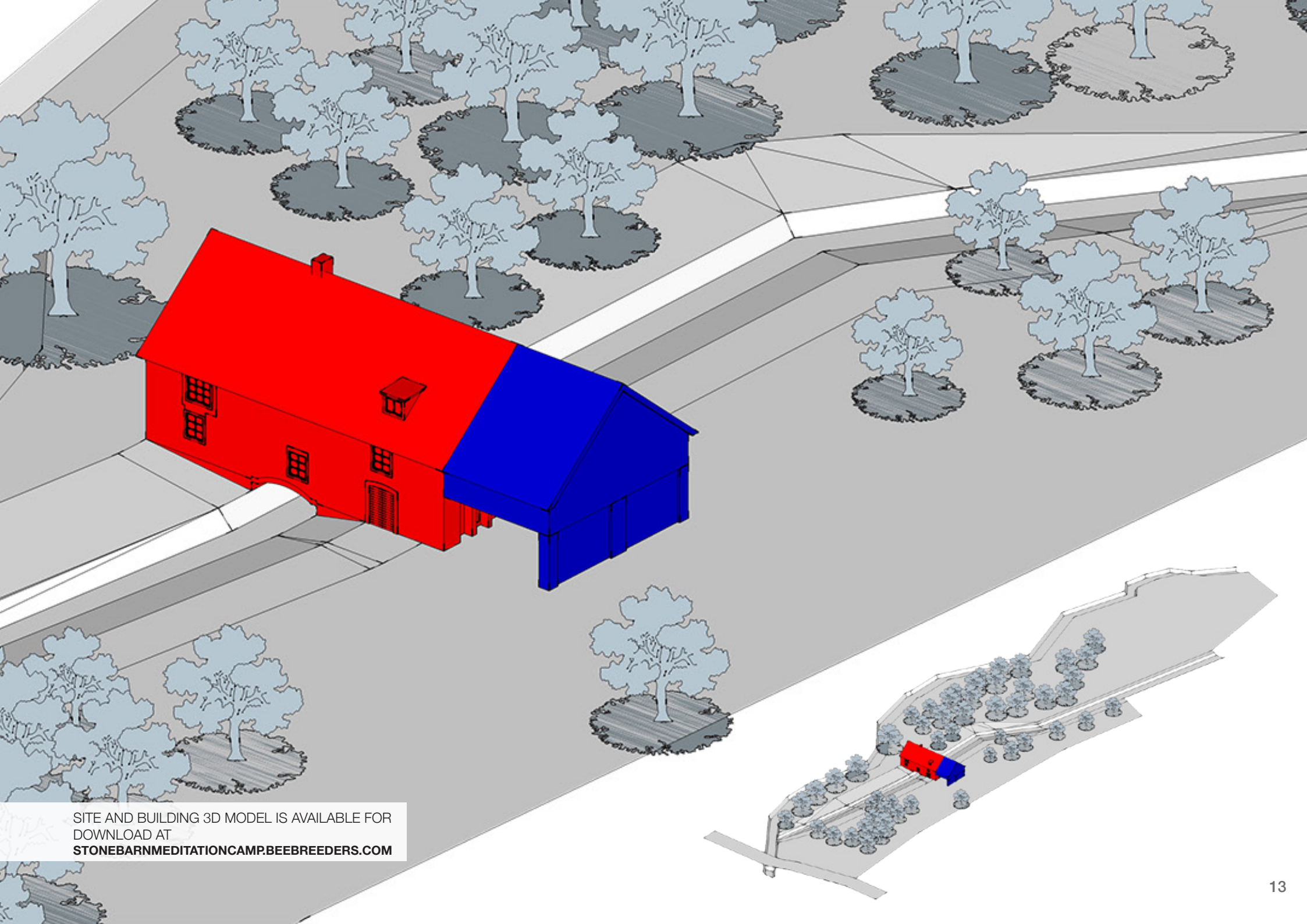
- Site boundary
- Existing building
- Demolished building
- River
- Road
- Terrain / Ditch

SCALE 0m 25m



SCALE 0m 10m

SITE CAD AND PDF PLAN AND SECTIONS ARE
 AVAILABLE FOR DOWNLOAD AT
STONEBARNMEDITATIONCAMP.BEEBREEDERS.COM



SITE AND BUILDING 3D MODEL IS AVAILABLE FOR
DOWNLOAD AT
STONEBARNMEDITATIONCAMP.BEEBREEDERS.COM

PROGRAMME

Competition participants must accommodate the following functions:



Guest Zone

- Main Event Hall (for meditation, yoga, etc.)
- Silence Chamber (small soundproof, isolated darkroom for 1-2 people)
- Accommodate up to 20 people in a variety of different-sized rooms ranging from single rooms to double rooms for up to four people.
- Dining room
- Kitchen
- Service areas (bathrooms, storage rooms, etc.)



Private Zone

- 2 Bedrooms
- Library
- Small Kitchen
- Bathroom



Outdoors

- Covered terrace
- Sauna
- Farm (optional)
- Vegetable/Fruit Garden (optional)
- Children's Playground (optional)



Internal and external circulation spaces

The BUILDING PROGRAMME is flexible, open to modifications and improved development strategies.

SITE RESTRICTIONS

- Participants can decide whether to restore the stone barn to its original historic design; or to reimagine its structure in a new way. However, the existing building cannot be demolished, only added to enhanced.
- There are no restrictions on underground construction.





PROJECT PROPOSAL REQUIREMENTS

- Comfortable accommodation for its occupants in all weather conditions - resistant to the elements of heat, cold, rain, snow, and wind;
- Incorporate environmentally responsible resources and efficient construction methods;
- Generate its own power and have a system in place for generating its own safe drinking water;
- Low maintenance in terms of effort and costs;
- Attractive accommodation in its own right.

The project qualities listed above are minimum requirements; the competition brief is open to adaptation and improved development strategies.

SUBMISSION REQUIREMENTS

- Participants are required to upload four (4) A2 landscape-orientated presentation boards (must not exceed 5mb per .jpg/.jpeg file) with sketches, renderings, plans, sections, elevations, diagrams, and/or other presentation tools to explain their proposal.
- No video files will be accepted.
- All information provided in writing must be in English.
- All submissions must be uploaded via the beebreeders.com upload panel. Access information and instructions on how to upload the presentation panel is issued to participants via email immediately after successful registration.
- Presentation boards must not show any information indicating the to the individual's/team's identity.

Participants that do not comply with the requirements will be disqualified without a refund.

RECOMMENDED SUBMISSION CONTENT

- Includes concept designs which highlight that all aspects of the design are of the highest quality and in keeping with the design brief and the proposed site.
- Indicates the main points of proposed plans and sections, multiple internal and external perspectives demonstrating the spatial quality of the building, and operational needs and accessibility requirements.
- Demonstrates project feasibility in regards to environment, climate conditions, lifecycle, and responsible use of materials.
- Demonstrates project construction, materiality, functions, management and maintenance; approach to environment, energy and sustainability, indoor environment and logistics.
- Includes visualizations; artist impression in nature setting to illustrate how their proposal fits in with the quality, value, and significance of the nature of Latvia.

PRIZES

3 winning proposals and 6 honourable mentions will be selected. Bee Breeders will award a total of US \$6,000 in prize money to competition winners as follows:

Prize money US \$6,000	
1st Prize US \$3,000	BB Student Award US \$500
2nd Prize US \$1,500	BB Green Award US \$500
3rd Prize US \$500	+ 6 HONOURABLE MENTIONS

More information about the special awards at stonebarnmeditationcamp.beebreeders.com



SRED Global real estate developers are committed to the construction of the Stone Barn Meditation Camp during 2017-2018, with all winning and honorable mention designs to be put forward for consideration for the final design of the camp.

PUBLICATIONS:

The winners will get international art and design media coverage and will be featured on the Bee Breeders website.

A full list of media partners who have committed to present the competition winners in their publications can be found at stonebarnmeditationcamp.beebreeders.com

CERTIFICATE:

Bee Breeders will also acknowledge the outstanding performance of all winners and honourable mentions with Certificates of Achievement.



COMPETITION SCHEDULE

Early Bird Registration
JANUARY 26 - FEBRUARY 22

Advance Registration
FEBRUARY 23 - MARCH 15

Last Minute Registration
MARCH 16 - APRIL 12

Closing date for registration
APRIL 12, 2017

Closing date for submission
MAY 3, 2017 (11.59 pm GMT)

Announcement of the winners
MAY 17, 2017

REGISTRATION FEES

	Enthusiasts and companies	Students*
Early Bird Registration	US \$90	US \$70
Advance Registration	US \$120	US \$100
Last Minute Registration	US \$140	US \$120

* See requirements here:
beebreeders.com/competition-registration-types



JURY & EVALUATION PROCESS

Competition jury consists of two jury panels:

- **Core jury panel**
- **Consultative jury panel**

Full jury panel members list is published on STONEBARNMEDITATIONCAMP.beebreeders.com.

The core and consultative jury panel will be responsible for setting the criteria that participants need to fulfil based on the site and brief, and will evaluate each submission accordingly.

Participants are advised to research both the working site and previous similar case studies as part of the design process.

STONE BARN MEDITATION CAMP is a competition which encourages participants to experiment with the limits of architecture. The jury may choose to reward projects that show extreme creativity in this area, even if they breach any of the rules, so long as it's justified.



Selecting Top 3 winners:

- ① Consultative jury panel will produce a shortlist of 40 from **all** submitted entries.
- ② Consultative jury panel will select 9 competition finalists from the shortlist.
- ③ Core jury panel will evaluate the 9 finalists and select the top 3 winning projects and the 6 honourable mentions.

Student award:

- ① Consultative jury panel will produce a shortlist of 40 from all submitted **student** entries.
- ② Consultative jury panel will select 9 competition finalists from the shortlist.
- ③ Core jury panel will evaluate the 9 finalists and select the winning project.

Green award:

- ① Consultative jury panel will produce a shortlist of 40 from **all** submitted entries.
- ② Consultative jury panel will select 9 competition finalists from the shortlist.
- ③ Core jury panel will evaluate the 9 finalists and select the winning project.

COMPETITION DOCUMENTATION

Following information is available for download on stonebarnmeditationcamp.beebreeders.com:

- *Full competition brief*
- Site and context photographs
- CAD and PDF site plan and sections
- 3D site model

All information can be downloaded as often as required; no additional information or material will be provided after registration.

The brief and all associated documentation for this competition are for the sole purpose of an academic exercise and are not legal documents.

The provided materials can be used or alternatives can be created or sourced at the participant's discretion.

MEDIA PARTNERS

A full list of media partners who have committed to present the competition winners in their publications can be found at stonebarnmeditationcamp.beebreeders.com

For potential media partners who are also interested in covering the competition and its winners, please contact us on hello@beebreeders.com

Competition press kit and banners are available on stonebarnmeditationcamp.beebreeders.com/press

ARCHITECTURE STUDENTS

Bee Breeders architecture competition organisers would like to hear from representatives of universities, schools, and colleges offering architecture/design studies.

Contact us to receive special student rates for group registrations (discount applies for 3+ registrations from one university/school) and to receive further information and support for getting your students involved in architecture competitions.

Send us request from your university email address along with basic information about yourself and your university/school.

Please note that only recognized university staff can apply for the reduced student rate.

ELIGIBILITY

Competition is open to all. No professional qualification is required. Design proposals can be developed individually or by teams (4 team members maximum).

People who have direct personal or professional relationships with jury panel members or organisers may not participate in this competition.



Full Competition Terms & Conditions:
[STONEBARNMEDITATIONCAMP.BEEBREEDERS.COM/terms](https://stonebarnmeditationcamp.beebreeders.com/terms)

© Bee Breeders
architecture competition organisers
hello@beebreeders.com
Beebreeders.com

