

Call for Artists

\$10,000 USD will be awarded to the “Best of Show” in the first annual 2017 National Juried Art Exhibition at the new Wausau Museum of Contemporary Art (WMOCA).

All artists, 18 years of age or older and residing in the United States, are encouraged to enter. This is an open-theme exhibit and will become an annual event. The deadline to enter is midnight, August 18, 2017.

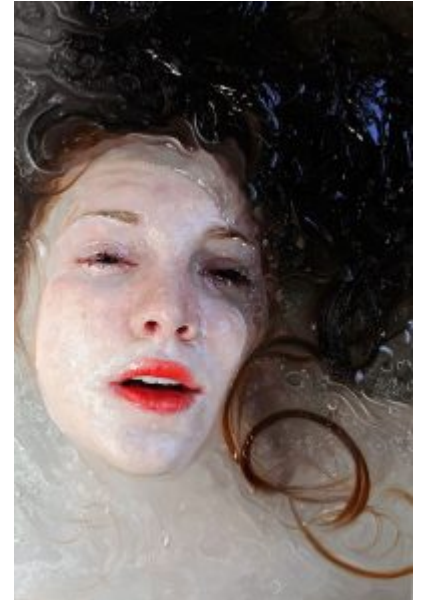
[Alyssa Monks](#), a Master of Contemporary Realism, is the Juror of this show. Alyssa sits on the Board of Trustees for the New York Academy of Art and was just recognized as one of the top 30 most influential female artists of our lifetime. Her works are exhibited and collected internationally.

Accepted works will be on exhibit from October 6 through December 29, 2017.

Requirements

- \$50 non-refundable entry fee per artist
- .jpg files of artwork (300 DPI, 2MB Max)
- [Online Submission Form](#)

Call Timeline



May 12, 2017 – call opens

August 18, 2017 – call closes

August 25, 2017 – notification of selected artists

September 22, 2017 – deadline for receiving all artwork

October 6, 2017 – exhibit opens

October 7, 2017 – Opening Reception with Alyssa Monks announcing the “Best of Show”

December 29, 2017 – Exhibition closes

Commission

Sales are encouraged with a 25% commission benefitting the Wausau Museum of Contemporary Art. As a condition of entry, the artist grants WMOCA permission to reproduce entered images for publicity and education.

Eligibility

The competition is open to artists, 18 years or older, nationwide. No international entries. Artists working in any medium are encouraged to enter, with the exception of video and computer generated work.

Shipping – Read Carefully!

Artists are responsible for the delivery and pick-up of their work. Accepted works may be hand delivered or shipped to the Wausau Museum of Contemporary Art, 309 McClellan Street, Wausau, WI 54403 between September 2 and September 22. Shipped work arriving damaged will not be exhibited or repaired. Accepted works may not be withdrawn prior to the closing of the exhibition. All work must be ready to hang, properly wired and assembled with instructions. Absolutely no packing peanuts! Boxes, crates and even small packages containing packing peanuts will be resealed, immediately returned and eliminated from the exhibition, no exceptions. Artists are responsible for round-trip shipping and insurance (during shipping) of artworks. All shipments must include a prepaid UPS or FED EX (absolutely no USPS stamps) return label and be shipped in a container appropriate for re-use in return shipping.

If you have questions, please email David Hummer at info@wmoca.org or call 715-571-6551

Copyright © 2017 MOCA, Inc. All rights Reserved
